

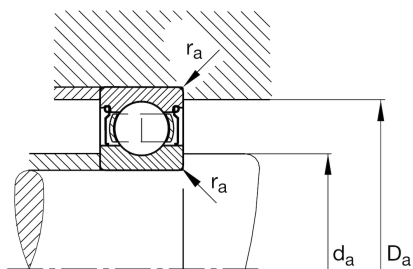
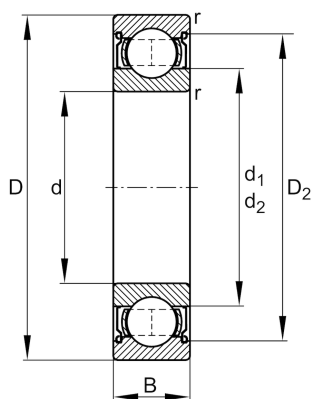
FAG

6305-2Z

Deep groove ball bearing

Schaeffler ID:
0167229900000Deep groove ball bearing 63...-2Z, single
row, shields, steel sheet metal cage

Technical information

**Dimensions**

r_{\min}	1.1 mm	Minimum chamfer dimension
D_2	52.5 mm	Caliber diameter outer ring
d_1	36.4 mm	Shoulder diameter inner ring
	0.24 kg	Weight

Main Dimensions & Performance Data

d	25 mm	Bore diameter
D	62 mm	Outside diameter
B	17 mm	Width
C_r	23,800 N	Basic dynamic load rating, radial
C_{0r}	11,500 N	Basic static load rating, radial
C_{ur}	780 N	Fatigue load limit, radial
n_G	13,700 1/min	Limiting speed
n_{gr}	12,300 1/min	Reference speed

Mounting dimensions

$d_{a\min}$	32 mm	Minimum diameter shaft shoulder
$D_{a\max}$	55 mm	Maximum diameter of housing shoulder
$r_{a\max}$	1.1 mm	Maximum fillet radius

Calculation factors

f_0	12.4	Calculation factor
-------	------	--------------------

Temperature range

T_{\min}	-20 °C	Operating temperature min.
T_{\max}	120 °C	Operating temperature max.